

REV	LOCATIONS	DESCRIPTION	DATE	REVISER	APPD
1	△	Part No.: Change FRJ45134 into FRJ45026	31/MAY/18	KATE	ERIC
2	△	Structure changes	10/JUL/20	KATE	CHERRY
3	△	Structure changes Remove the buckle points	11/JUN/24	MATT	LEO

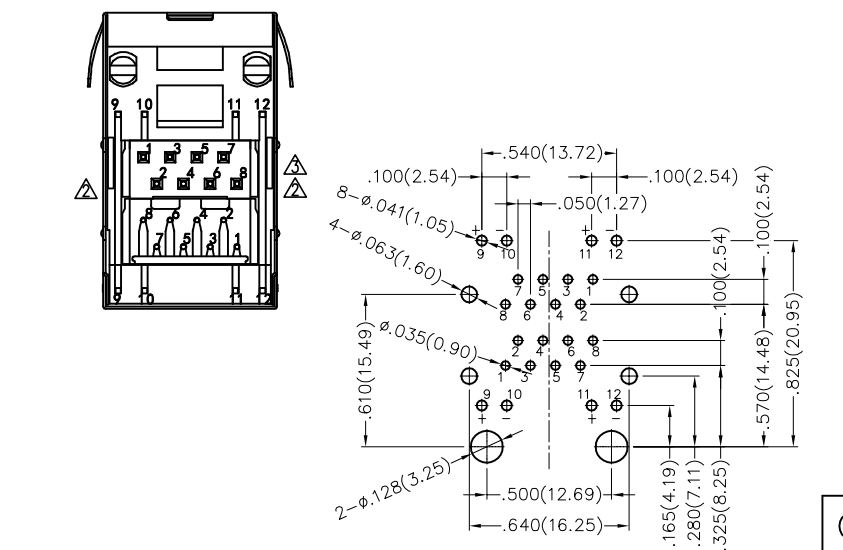
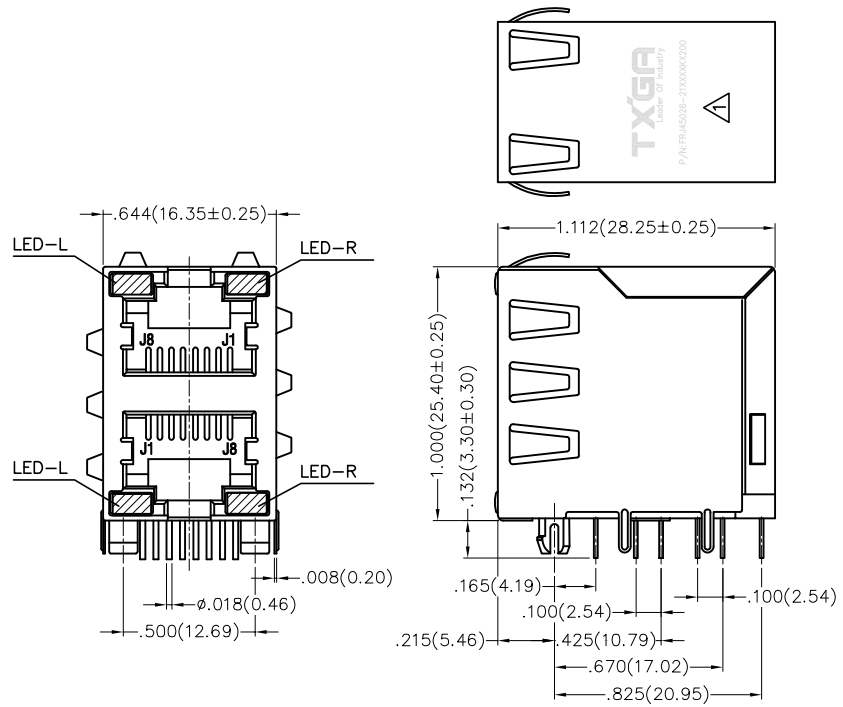
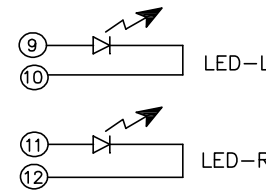
SPECIFICATIONS

Electrical

Current Rating: 1.5A AC(rms)/DC  
Voltage Rating: 125V AC(rms)/DC  
Contact Resistance: 50 mΩ Max  
Insulation Resistance: 500 MΩ Min / DC 500V  
Withstanding Voltage: 1000V AC r.m.s  
Operating Temperature: -40°C~+85°C  
Durability: 750 cycles Min.

Material and plating

Housing: Glass filled polyester (UL 94V-0)  
Contact: Phosphor bronze/ Gold plated  
Shell: Copper alloy/ Nickel plated



Recommended P.C.Board Layout

Ordering Information

FRJ45 026 - 2 1 XX K6 K X 2 0 0  
1 2 3 4 5 6 7 8 9

1 Category FRJ45-RJ45 Connector	2 Distinction No. 026	3 Ports options 2-2 Ports	4 Plating 1-Gold Plated	5 Thickness of plating 00-Gold flash 03-3μ" Custom plate available
6 Color-Resin K6-Black	7 Packaging K-Tray	8 LED style 1-L: Yellow R:Green 2-L: Green R:Yellow	9 Contact type 2-Round pin	

THIRD ANGLE PROJECTION	GENERAL TOLERANCES (UNLESS SPECIFIED)		APPROVE BY FRANK	DATE 18/JAN/17	PART NO. △ FRJ45026-21XXK6KX200	ITEM NO. FRJ45026	 Building Technology Cornerstone	
	DESIGN UNITS Inch (metric)	X.±.012(0.30) X.X±.008(0.20) X.XX±.006(0.15) X.XXX±.004(0.10)	X'.±5' .X'±2' .XX'±1' .XXX'±0.5'	CHECKED BY CHERRY	DATE 18/JAN/17	TITLE RJ45 Connector 8P8C 90°Angle		REV 3
SCALE 5:1	SIZE A4		DRAWN BY KATE	DATE 18/JAN/17	THIS DRAWING CONTAINS INFORMATION THAT IS PROPRIETARY TO TXGA INDUSTRIAL ELECTRONICS(S.Z)CO.,LTD AND SHOULD NOT BE USED WITHOUT WRITTEN PERMISSION			

REV	LOCATIONS	DESCRIPTION	DATE	REVISER	APPD
1	△	1. Add the "TXGA" logo 2. Part No.: Change FRJ45134 into FRJ45026	31/MAY/18	KATE	ERIC

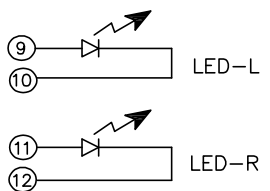
SPECIFICATIONS

Electrical

Current Rating: 1.5A AC(rms)/DC  
Voltage Rating: 125V AC(rms)/DC  
Contact Resistance: 50 mΩ Max  
Insulation Resistance: 500 MΩ Min / DC 500V  
Withstanding Voltage: 1000V AC r.m.s  
Operating Temperature: -20°C~+75°C  
Durability: 750 cycles Min.

Material and plating

Housing: Glass filled polyester (UL 94V-0), Black  
Contact: Phosphor bronze/ Selective gold in contact area, tin on tail  
Shell: Copper alloy/ Nickel plated

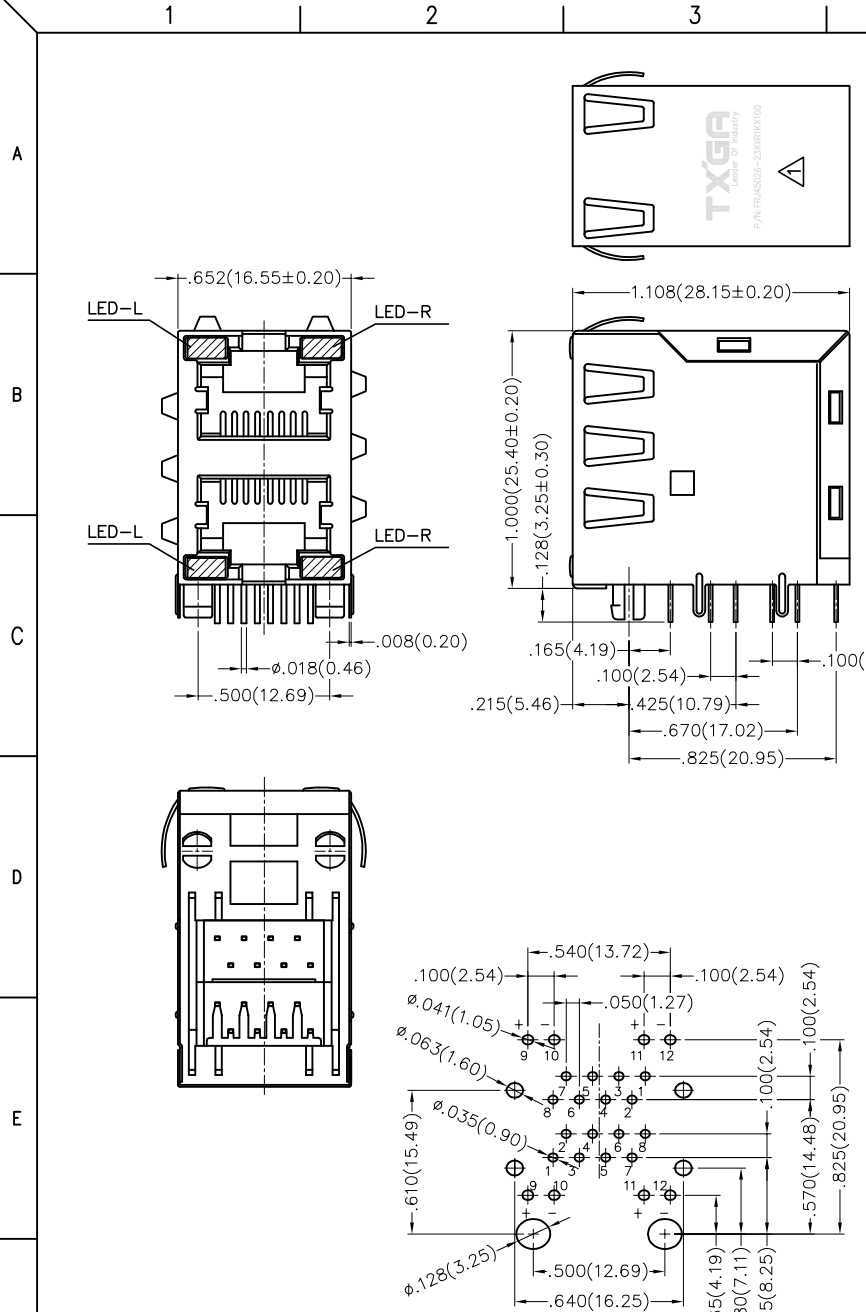


Ordering Information

FRJ45 026 - 2 3 XX R1 K X 1 0 0  
1 2 3 4 5 6 7 8 9

1 Category FRJ45-RJ45 Connector	2 Distinction No. 026	3 Ports options 2-2 Ports	4 Plating 3-Selective gold in contact area, tin on tail	5 Thickness of plating 00-Gold flash 03-3μ" Custom plate available
6 Color-Resin R1-Red	7 Packaging K-Tray	8 LED style 1-L: Yellow R:Green 2-L: Green R:Yellow	9 Contact type 1-Square pin	

THIRD ANGLE PROJECTION	GENERAL TOLERANCES (UNLESS SPECIFIED)		APPROVE BY FRANK	DATE 18/JAN/17	PART NO. △ FRJ45026-23XXR1KX100	ITEM NO. FRJ45026	 Building Technology Cornerstone
	DESIGN UNITS Inch (metric)	X.±.012(0.30) X.X±.008(0.20) X.XX±.006(0.15) X.XXX±.004(0.10)	X.±5° .X'±2" .XX'±1" .XXX'±0.5'	CHECKED BY CHERRY	DATE 18/JAN/17	TITLE RJ45 Connector 8P8C 90°Angle	
SCALE 5:1	SIZE A4		DRAWN BY KATE	DATE 18/JAN/17	THIS DRAWING CONTAINS INFORMATION THAT IS PROPRIETARY TO TXGA INDUSTRIAL ELECTRONICS(S.Z)CO.,LTD AND SHOULD NOT BE USED WITHOUT WRITTEN PERMISSION		



Recommended P.C.Board Layout

